



Administrator



Driver Services
Bureau



Rebecca Connors

Operation
Services Bureau



Sky Schaefer

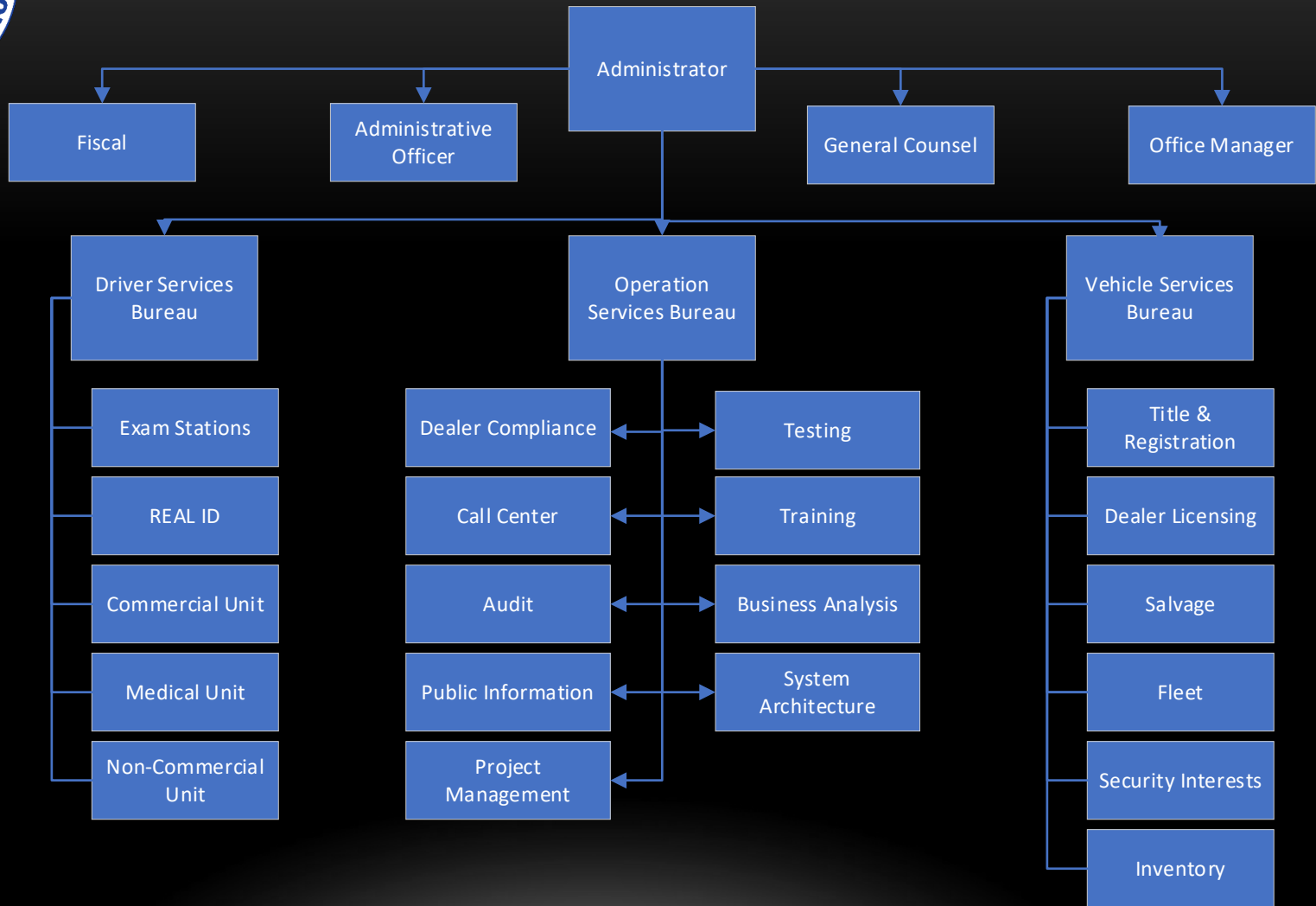
Vehicle Services
Bureau



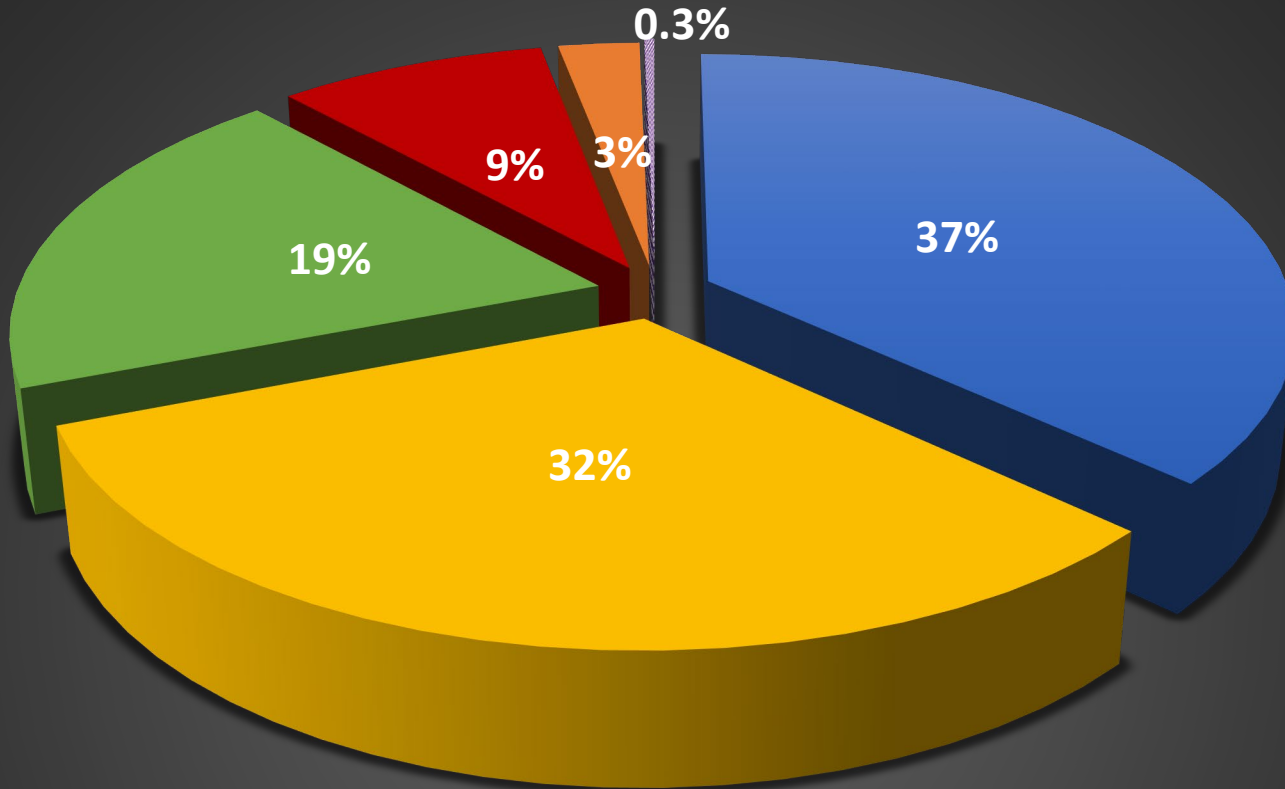
Joann Loehr



MVD ORGANIZATIONAL CHART



Motor Vehicle Division Fiscal Year 2021



- General Fund \$8,999,159 or 37%
- Administration Fee \$7,833,181 or 32%
- Montana Title Insurance Vehicle System, Montana Correctional Enterprises \$4,676,762 or 19%
- Merlin Funding \$2,130,788 or 9%
- Other appropriation \$645,155 (less than 5% each) or 3% overall
- Federal Grants \$81,935 or .3%



WHERE WE ARE LOCATED

Western Region

8 offices

Northern Region

13 offices

Central Region

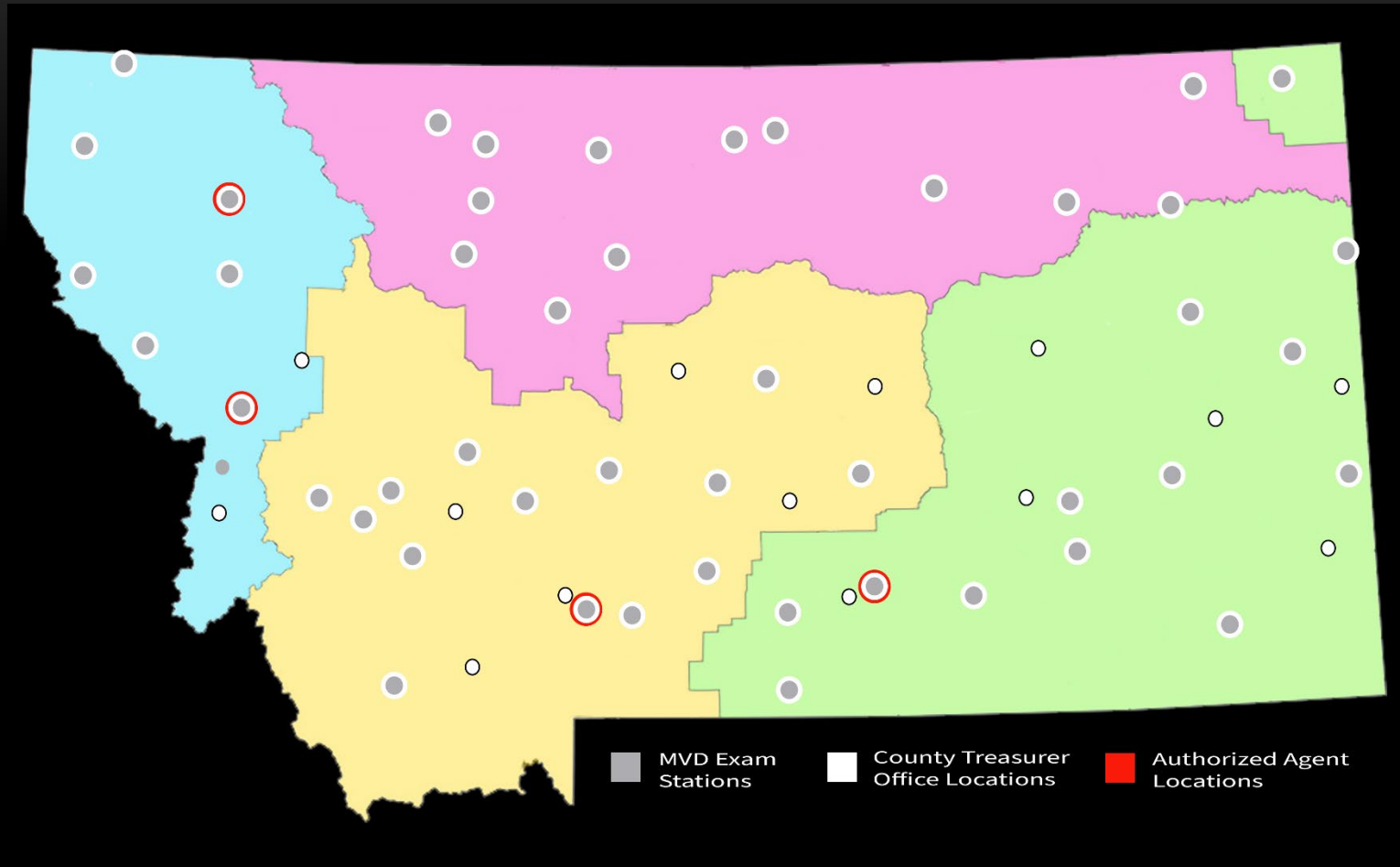
14 offices

Eastern Region

13 offices

Helena (HQ)

Leadership,
Record & Driver
Control, Vehicle &
Operation Services
Bureaus





MVD ITEMS OF INTEREST

- Our Mission – Driving Customer Service
- 48 exam locations across the state
- 71 partner locations - county treasurer offices and authorized agents



MVD REVENUE

- Collected, reconciled, and distributed revenue in FY20:
 - \$119,209,121 - General Fund
 - \$42,612,031 - State Special Revenue



MVD STATS

Licensed drivers:

- 2018 – 808,825
- 2019 – 814,355
- 2020 – 826,754

Licenses Issued:

- 2018 – 187,527
- 2019 – 162,447
- 2020 – 154,341



MVD STATS

Titles Issued:

- 2018 – 208,473
- 2019 – 220,782
- 2020 – 206,948

Registrations Issued:

- 2018 – 2,902,978
- 2019 – 3,009,962
- 2020 – 3,117,253



CRITICAL ONGOING PROJECTS

- Customer Experience Improvement project
- MVD Your Way
- MERLIN Driver Modernization
- Authorized Agents
- REAL ID implementation