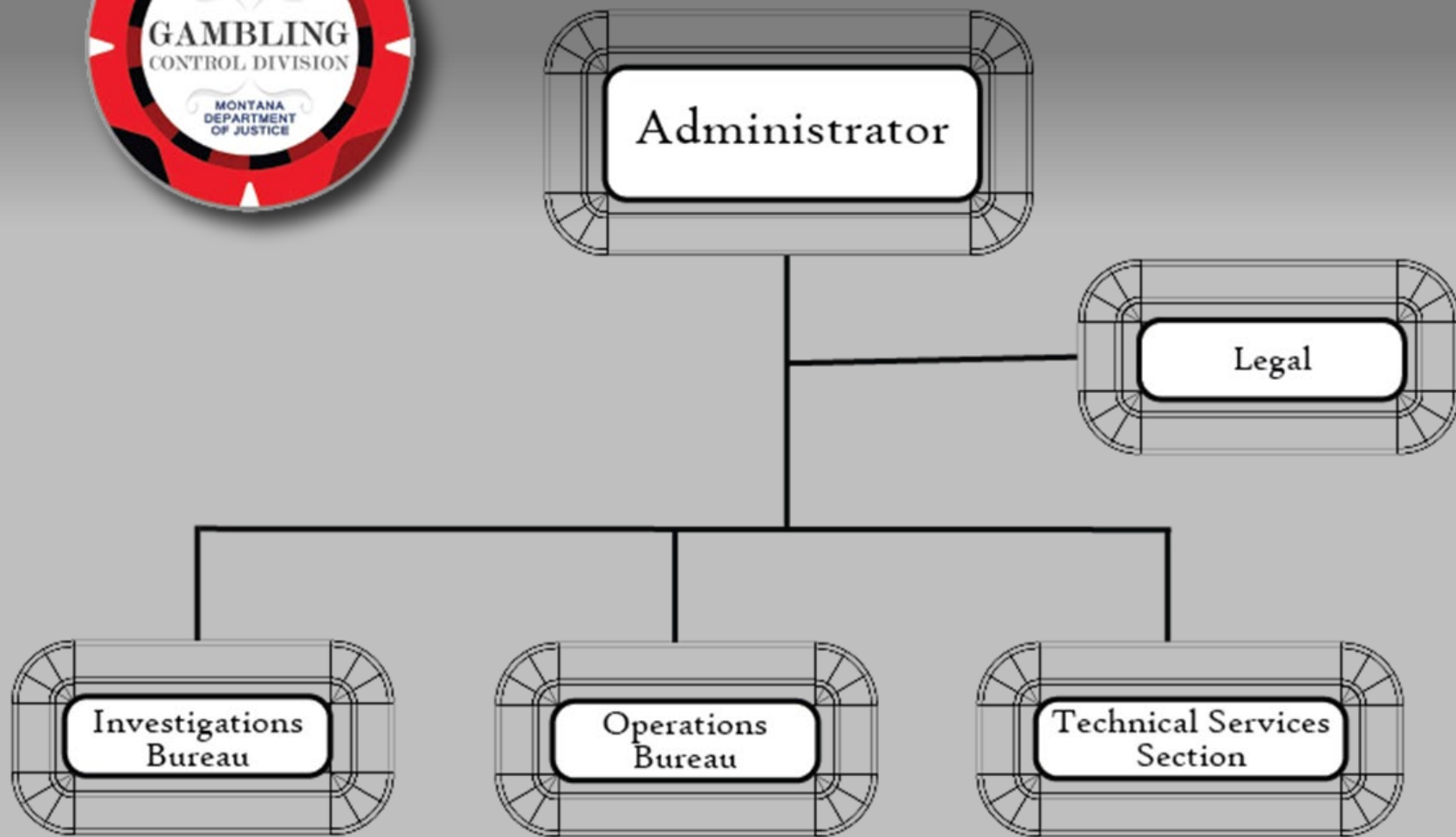


GAMBLING CONTROL

Rusty Gackle, Administrator





DIVISION RESPONSIBILITIES

- The Gambling Control Division regulates all forms of gambling in Montana, except for the Montana Lottery, Sports Betting and Horseracing.
 - Video gambling machines (keno, poker, bingo, or line games)
 - Live card games (poker)
 - Live bingo and live keno
 - Sports pools and sports tabs
 - Calcutta pools
 - Casino nights
 - Raffles
 - Live fantasy sports leagues
 - Dice games (shake-a-day, shaking for music or drinks, and Cee-lo)



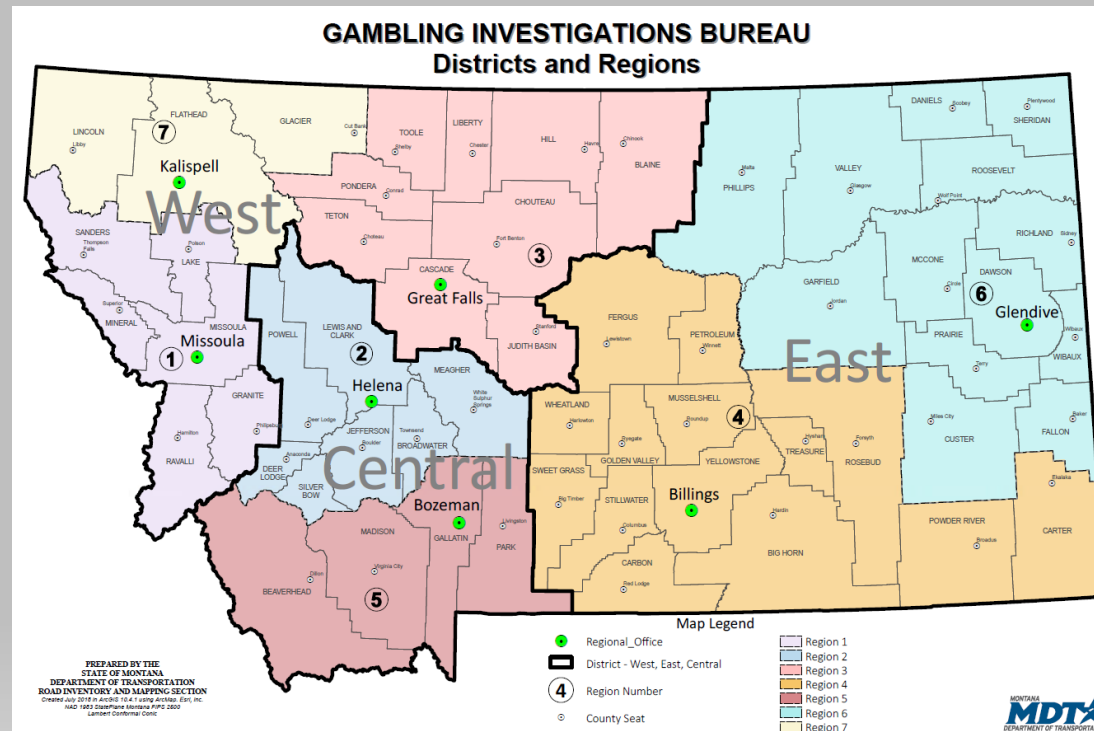
DIVISION RESPONSIBILITIES

- **Operations Bureau**
 - Fiscal, Communications, Project Management, and Records Management
- **License and Tax Section**
 - Gambling and Alcohol Application/Permit Processing, Tax Collections, and Tax Audits
- **Technical Services Section**
 - VGM Testing (hardware/software), System Testing, VGM Inspections, and Database Programming
- **Legal Section**
 - Prosecution (civil/criminal), Administrative Rule Writing, and Education
- **Investigations Bureau**
 - Gambling, Alcohol, and Tobacco Investigations, Online Investigations, License Suitability, and Financial Audits
 - Alcohol enforcement agreement with Department of Revenue



DIVISION RESPONSIBILITIES

- 7 Offices spread throughout the state
 - Helena – 21 FTE
 - Billings – 8 FTE
 - Bozeman – 3 FTE
 - Glendive – 2 FTE
 - Great Falls – 2 FTE
 - Kalispell – 2 FTE
 - Missoula – 8 FTE



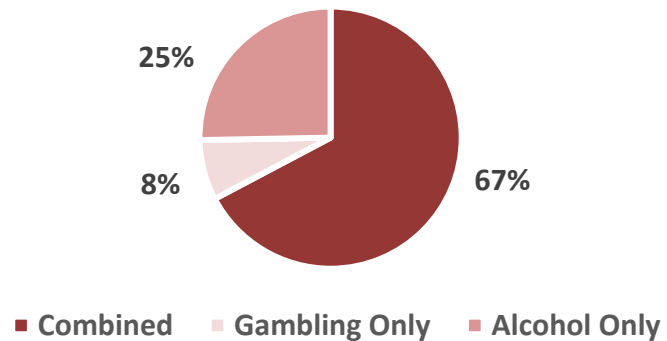
DIVISION RESPONSIBILITIES

- The Division has enforcement authority over gambling, alcohol, and tobacco.
- Under Montana law, businesses must have an appropriate alcoholic beverage license before they can conduct certain gambling activities, specifically live card games, sports pool or sports tab games, and video gambling machines.
- Established MOUs for services provided on behalf of Gambling Control Division:
 - Alcoholic Beverage Control Division – licensing, auditing, and investigative services
 - Department of Revenue – tobacco tax enforcement
 - Montana Lottery – investigative services (sports betting)



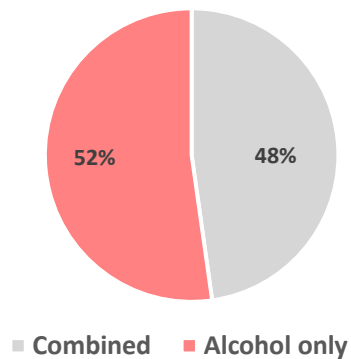
2019-2020 BIENNIUM STATISTICS

New Applications - FY19/FY20

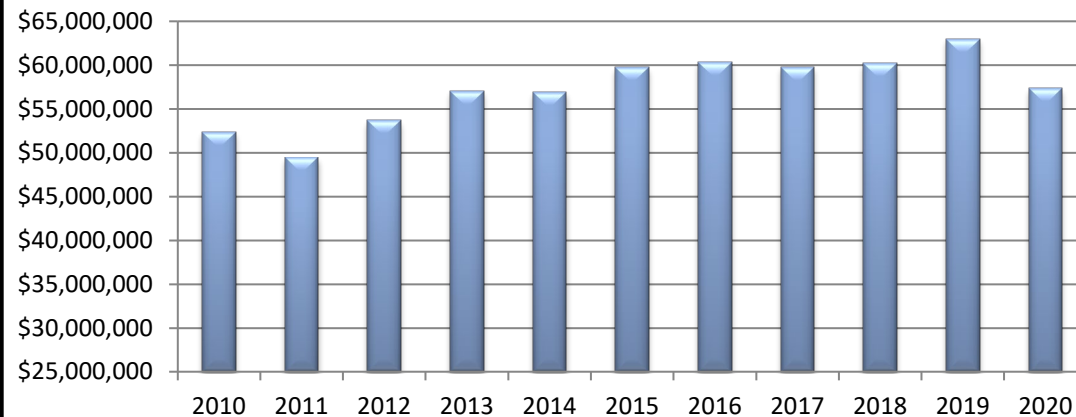


- License Applications
- Gambling Investigations Bureau Inspections
- Video Gambling Machine Tax

Premises Inspections FY20



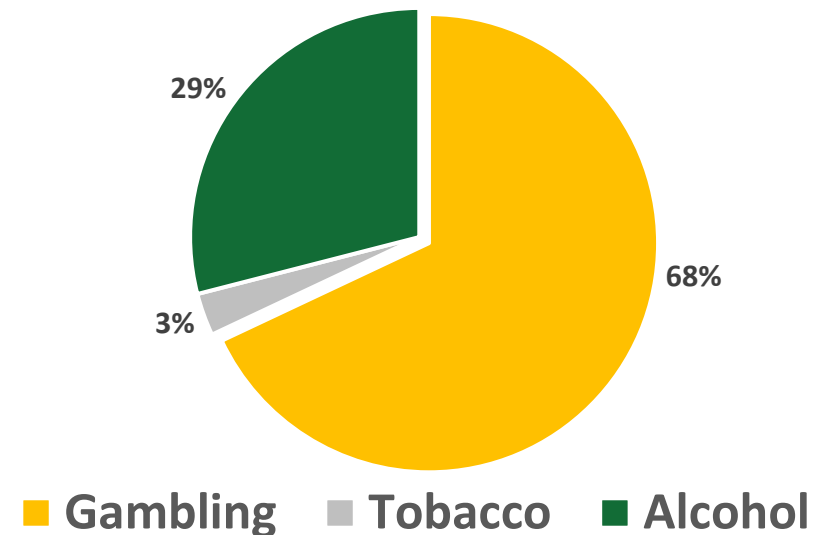
Video Gambling Machine Tax Collection
by Fiscal Year



BUDGET

- GCD is funded with 68% gambling state special revenue from the collections of license and permit fees for gambling activities.
- GCD receives 29% of its budget from the Liquor Proprietary Fund for services provided on behalf of Alcoholic Beverage Control Division
- GCD receives 3% from the Tobacco Settlement Fund for the tobacco tax investigative services provided to DPHHS and DOR.

Gambling Control Division Funding



GAMBLING CONTROL

Call (406) 444-1971 or email gcd@mt.gov
<https://dojmt.gov/gaming>

Rusty Gackle– 444-5693 or Rusty.Gackle@mt.gov

